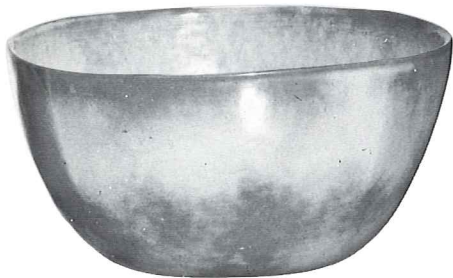




*5V—2 QT. BAKER/BEAN POT
*5V/W—BAKER/W WARMER SET



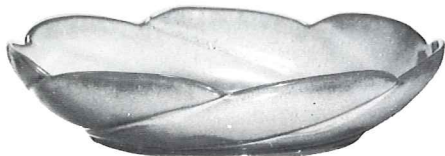
*5W—3 QT. BAKER/BEAN POT
*5W/W—BAKER/W WARMER SET



*5N—4½" QT. BOWL



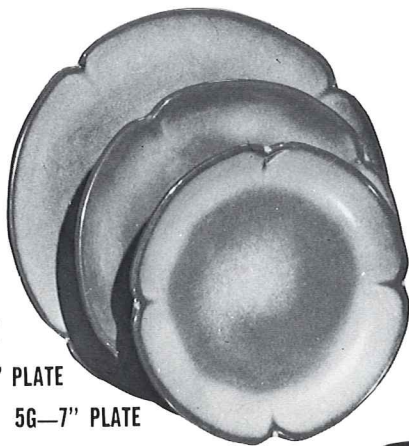
*5XL—20 OZ. BOWL
*5X—14 OZ. CEREAL
*5XS—9 OZ. FRUIT



*218—12" BOWL



*6S—TWO SPOUT GRAVY



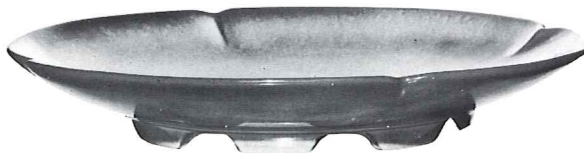
5F—10" PLATE

5FS—9" PLATE

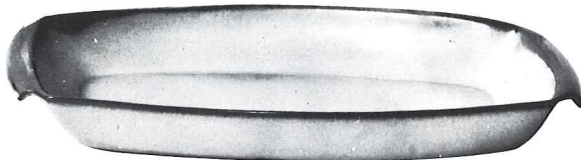
5G—7" PLATE



*5NS—9" VEGETABLE

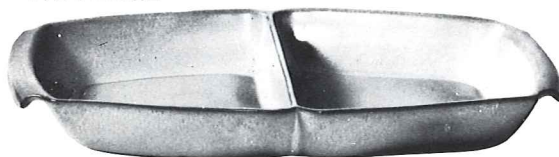


*5FC—15" CHOP PLATE
NO FLAME

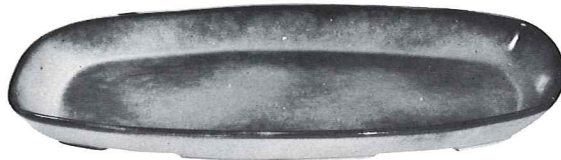


*5P—17" PLATTER
NO FLAME

*5Q—13" PLATTER



*5QD—13" DIVIDED BOWL



*5QS—13" PLATTER

NO FLAME

*5PS—9" TRAY

*6P—11" PLATTER



*6T—6 CUP TEAPOT



*6J—2 CUP TEAPOT



*5M—16 OZ. MUG



*5CC—5 OZ.
TEACUP



** 5C—CUP
5E—5½" SAUCER



*5LC—6 OZ.
JUICE



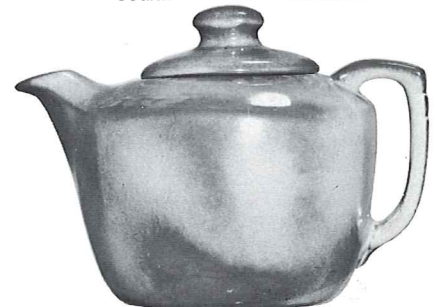
*5L—12 OZ.
TUMBLER



*5DB—6 OZ.
SUGAR



*5DA—6 OZ.
CREAMER



*5TL—12 CUP TEAPOT



*5D—3 QT. PITCHER

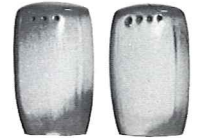
*5AB—CREAM & SUGAR SET



*5A—12 OZ. CREAMER



*5B—SUGAR WITH LID



*5H—SALT & PEPPER

This page available in colors shown on opposite page - except where noted -

*Available in FRANKOMA COLORS - *Except where noted. Add 50% for Flame

** Cups will be sent in solid color unless specified TC.